

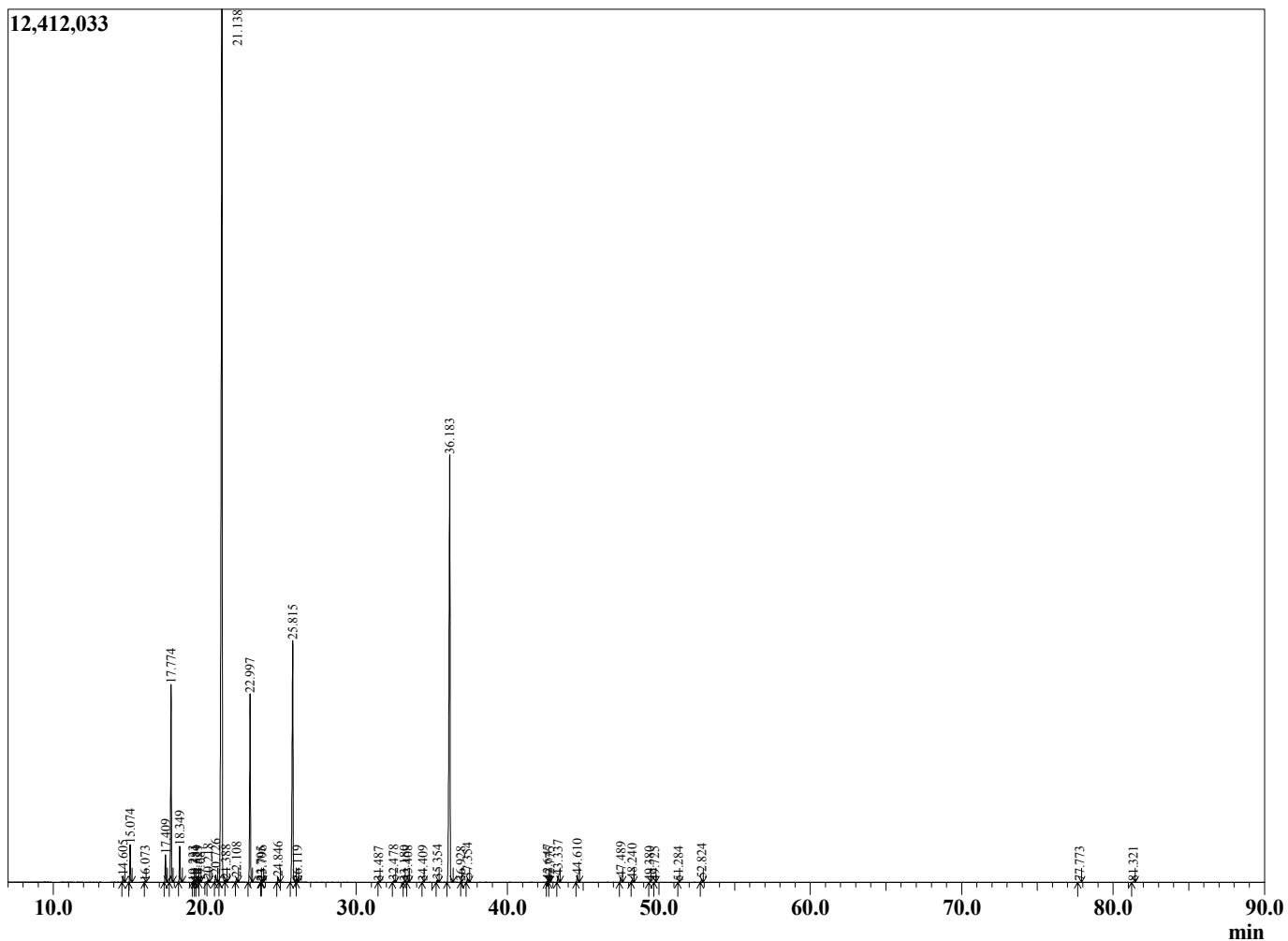
Sample Information

Sample Type : Essential Oil
 Sample Name : Citrus bergamia

Bergamot
 Lot# ITE17-ET
 Country: Italy



Chromatogram Citrus bergamia



R.Time	Name	Area%
14.605	alpha-Thujene	0.20
15.074	alpha-Pinene	1.24
16.073	Camphene	0.03
17.409	Sabinene	0.97
17.774	beta-Pinene	6.89
18.349	Myrcene	1.29
19.233	Octanal	0.04
19.381	Pseudolimonene	0.01
19.529	alpha-Phellandrene	0.03
19.687	delta-3-Carene	0.02
20.218	alpha-Terpinene	0.10
20.726	para-Cymene	0.29
21.138	Limonene	46.74
21.388	cis-beta-Ocimene	0.05
22.108	trans-beta-Ocimene	0.19
22.997	gamma-Terpinene	7.28
23.705	Octanol	0.01
23.796	trans-Sabinene hydrate	0.03
24.846	Terpinolene	0.21
25.815	Linalool	11.22
26.119	Nonanal	0.03
31.487	Terpinen-4-ol	0.01
32.478	alpha-Terpineol	0.07
33.180	Decanal	0.02
33.408	Octyl acetate	0.05
34.409	Nerol	0.02
35.354	Neral	0.09
36.183	Linalyl acetate	21.56
36.928	Unidentified	0.00
37.354	Geranial	0.15
42.647	alpha-Terpinyl acetate	0.06
42.775	Citronellyl acetate	0.01
43.337	Neryl acetate	0.26
44.610	Geranyl acetate	0.32
47.489	beta-Caryophyllene	0.20
48.240	trans-alpha-Bergamotene	0.11
49.380	trans-beta-Farnesene	0.01
49.725	alpha-Humulene	0.02
51.284	Germacrene D	0.01
52.824	beta-Bisabolene	0.15
77.773	Citropten	0.01
81.321	Isobergapten	0.01

100.00